

## Strategy

The portfolio managers have a value contrarian investment style that aims to generate outperformance through fundamentals-driven bottom-up security selection approach within the investment universe. Their focus is on identifying fundamentally good business run by good management teams in segments of the market that are currently out of favour, which leads to greater valuation anomalies that offer a margin of safety.

## Objectives & Investment Policy

**Objective:** The fund aims to achieve capital growth over time.

**Investment Policy:** The fund invests at least 70% of its assets, in equities of companies listed in China and Hong Kong, as well as in equities of non-Chinese companies which do most of their business in China. China is considered to be an emerging market. The fund may also invest in money market instruments on an ancillary basis. The fund may invest up to 60% of its assets (directly and/or indirectly) in China A and B Shares (in aggregate).

**Investment Process:** In actively managing the fund, the Investment Manager considers growth and valuation metrics, company financials, return on capital, cash flows and other measures, as well as company management, industry, economic conditions, and other factors. The Investment Manager takes into account Sustainability Risks in its investment process. For more information see "Sustainable Investing and ESG Integration".

**Derivatives and Techniques:** The fund may use derivatives for hedging and for efficient portfolio management.

**Benchmark:** MSCI China Capped 10% Index. Used for: investment selection, risk monitoring, and performance comparison. The fund invests in securities of the benchmark, however, the management of the fund is discretionary, therefore the fund may invest in securities not included in the benchmark, and its performance over any period may or may not deviate significantly from that of the benchmark.

The portfolio has adhered to its policy objective.

## Risk Factors

Funds are subject to charges and expenses. Charges and expenses reduce the potential growth of your investment. This means you could get back less than you paid in. The costs may increase or decrease as a result of currency and exchange rate fluctuations. Please refer to the Prospectus and KID of the fund before making any final investment decisions. This fund invests in emerging markets which can be more volatile than other more developed markets. This fund uses financial derivative instruments for investment purposes, which may expose the fund to a higher degree of risk and can cause investments to experience larger than average price fluctuations. The fund promotes environmental and/or social characteristics. The Investment Manager's focus on securities of issuers which maintain sustainable characteristics may affect the fund's investment performance unfavourably in comparison to similar funds without such focus. The sustainable characteristics of securities may change over time. When referring to sustainability-related aspects of the promoted fund, the decision to invest should take into account all characteristics or objectives of the promoted fund as detailed in the Prospectus. Information on sustainability-related aspects is provided pursuant to SFDR at <https://www.fidelity.lu/sfdr>.

## Fund Facts

**Launch date:** 18.08.03

**Portfolio manager:** Nitin Bajaj, Alice Li

**Appointed to fund:** 30.09.22, 01.08.21

**Years at Fidelity:** 23, 7

**Fund size:** \$ 2,315m

**Number of positions in fund\*:** 72

**Fund reference currency:** US Dollar (USD)

**Fund domicile:** Luxembourg

**Fund legal structure:** SICAV

**Management company:** FIL Investment Management (Luxembourg) Sarl

**Portfolio Turnover Cost (PTC):** 0.07%

**Portfolio Turnover Rate (PTR):** 58.34%

**Category:** Regional - Equity - General

## Share Class Facts

Other share classes may be available. Please refer to the prospectus for more details.

**Launch date:** 18.08.03

**NAV price in share class currency:** 71.02cpu

**ISIN:** LU0173614495

**SEDOL:** 7677645

**WKN:** A0CA6V

**Bloomberg:** FIDFDFO LX

**Dealing cut-off:** 12:00 UK time (normally 13:00 Central European Time)

**Distribution type:** Income

**Distribution frequency:** Annual

**Ongoing Charges Figure (OCF) per year:** 1.90% (30.04.25)

**OCF takes into account annual management charge per year:** 1.50%

## Independent Assessment

Information is the latest available at date of publication. See Glossary for further details. As some ratings agencies may use past performance to produce their assessments, these are not a reliable indicator of future results.

**Morningstar Rating:** \*\*\*\*

The rating measures how well a fund has balanced risk and reward relative to its peers. Star ratings are strictly based on past performance and Morningstar suggests investors use them to identify funds that are worthy for further research. The top 10% of funds in a category will receive a 5-star rating and the next 22.5% receive a 4-star rating. Only ratings of 4 or 5 stars are displayed on the factsheet. **TER:** 1.90

**Initial charge:** Maximum 5.25%

**Valuation point:** Valued once a day (each Luxembourg business day). For relevant cut-off times please refer to your distributor.

## Risk Indicator



The risk indicator assumes you keep the product for 5 years. The actual risk can vary significantly if you cash in at the early stage and you may get back less. The summary risk indicator is a guide to the level of risk of this product compared to other products. It shows how likely it is that the product will lose money because of movements in the markets or because we are not able to pay you. We have classified this product as 5 out of 7, which is a medium risk class. This rates the potential losses from future performance at a medium level, and poor market conditions could impact the capacity to pay you. Returns may increase or decrease as a result of currency fluctuations. This product does not include any protection from future market performance so you could lose some or all of your investment. If FIL Investment Management (Luxembourg) SARL is not able to pay you what is owed, you could lose your entire investment.

Past performance does not predict future returns. The fund's returns may increase or decrease as a result of currency fluctuations. The investment which is promoted concerns the acquisition of units or shares in a fund, and not in a given underlying asset owned by the fund.

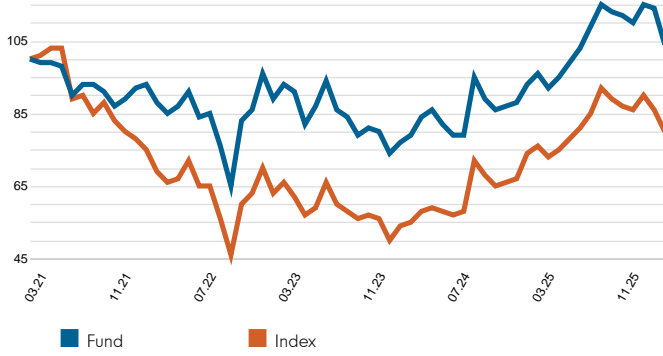
**Performance Comparator(s)**

**Peer Group Universe** Morningstar EAA Fund China Equity  
**Market index from 01.02.08** MSCI China Capped 10% Index (Net)

Market index is for comparative purposes only unless specifically referenced in the Objectives & Investment Policy on page 1. The same index is used in the positioning tables on this factsheet.

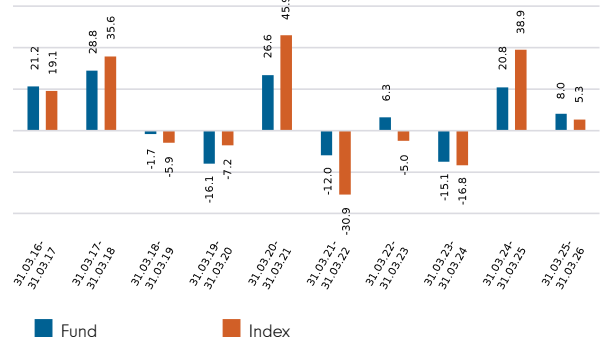
Where the effective date for the current market index is after the share class launch date, full history is available from Fidelity.

**Cumulative performance in USD (rebased to 100)**

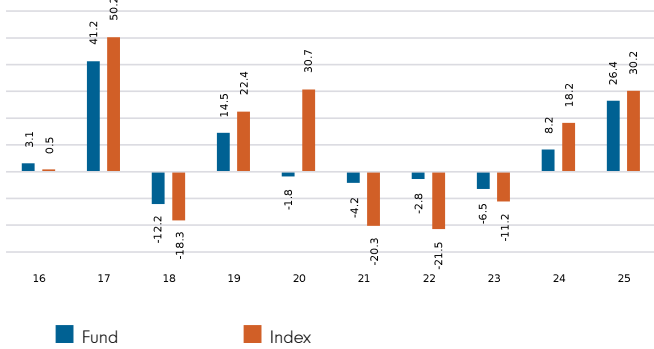


Performance is shown for the last five years (or since launch for funds launched within that period).

**Performance for 12 month periods in USD (%)**



**Performance for calendar years in USD (%)**



**Annual return in USD (%)**

Highest annual return 143.42 (31.10.2007)  
 Lowest annual return -61.75 (31.10.2008)

**Performance to 31.03.26 in USD (%)**

	1m	3m	YTD	1yr	3yr	5yr	Since 18.08.03*
<b>Fund cumulative growth</b>	-8.9	-5.9	-5.9	8.0	10.8	3.6	739.6
<b>Index cumulative growth</b>	-7.4	-7.3	-7.3	5.3	21.7	-20.2	624.2
<b>Fund annualised growth</b>	-	-	-	8.0	3.5	0.7	9.9
<b>Index annualised growth</b>	-	-	-	5.3	6.8	-4.4	9.1

Source of fund performance and volatility and risk measures is Fidelity. Performance is excluding initial charge.

Basis: nav-nav with income reinvested, in USD, net of fees.

Market indices are sourced from RIMES and other data is sourced from third-party providers such as Morningstar.

\*Performance commencement date.

Performance is calculated for the portfolio. The individual investor performance may differ as a result of initial fees, the actual investment date, the date of reinvestment and dividend withholding tax.

**Definition of terms:**

**Annualised performance:** Annualised performance show longer term performance rescaled to a 1 year period. Annualised performance is the average return per year over the period. Actual annual figures are available to the investor on request.

**Equity:** the percentage of the fund that is currently invested in the equity market.

**Highest & Lowest return:** The highest and lowest returns for any 1 year over the period since inception have been shown.

**NAV:** The net asset value represents the assets of a Fund less its liabilities.

**Other:** the value of any non-equity investments (excluding cash funds) expressed as a percentage of fund TNA.

**Uninvested cash:** this is 100% minus the fund's Equity exposure and minus Other. This leaves any residual cash exposure that is not invested in shares or via derivatives.

**% TNA:** Data is presented as a percentage of TNA, which stands for Total Net Assets (the value of all the fund's assets after the deduction of any liabilities).

Fidelity Funds | China Focus Fund A-USD | MDD as at 31 March 2026 | Published 23 April 2026

Sector/Industry Exposure (% TNA)

Sector GICS	Fund	Index	Relative
Consumer Discretionary	26.0	27.6	-1.6
Communication Services	15.4	14.9	0.5
Financials	12.2	20.3	-8.1
Consumer Staples	10.9	3.5	7.4
Industrials	10.0	5.7	4.3
Real Estate	8.1	1.5	6.6
Energy	6.3	3.7	2.6
Materials	5.9	6.0	0.0
Utilities	1.7	2.1	-0.4
Information Technology	1.5	9.5	-8.0
Health Care	0.5	5.4	-4.8
<b>Total Sector Exposure</b>	<b>98.4</b>	<b>100.0</b>	
Other Index / Unclassified	0.0	0.0	
<b>Total Equity Exposure</b>	<b>98.4</b>	<b>100.0</b>	

Geographic Exposure (% TNA)

	Fund	Index	Relative
China	77.6	99.9	-22.3
Hong Kong	8.2	0.0	8.2
Netherlands	4.4	0.0	4.4
Kazakhstan	2.0	0.0	2.0
Taiwan	1.8	0.0	1.8
Australia	1.8	0.0	1.8
United States	1.2	0.1	1.1
Indonesia	0.8	0.0	0.8
Canada	0.6	0.0	0.6
<b>Total Geographic Exposure</b>	<b>98.4</b>	<b>100.0</b>	
Other Index / Unclassified	0.0	0.0	
<b>Total Equity Exposure</b>	<b>98.4</b>	<b>100.0</b>	

Top Positions (% TNA)

	Sector GICS	Geographic Location	Fund	Index	Relative
TENCENT HLDGS LTD	Communication Services	China	8.3	10.1	-1.8
ALIBABA GROUP HOLDING LTD	Consumer Discretionary	China	4.5	9.9	-5.4
PROSUS NV	Consumer Discretionary	Netherlands	4.4	0.0	4.4
BOC AVIATION LTD	Industrials	China	3.4	0.1	3.3
INDUSTRIAL & COML BK CHINA	Financials	China	3.3	2.5	0.8
CHINA CONSTRUCTION BANK	Financials	China	3.2	4.3	-1.1
CHINA MERCHANTS BANK CO LTD	Financials	China	3.0	1.3	1.7
CHINA MENGNIU DAIRY CO	Consumer Staples	China	2.6	0.3	2.3
TRIP.COM GROUP LTD	Consumer Discretionary	China	2.3	1.2	1.1
POLY PROPERTY SERVICES CO LTD	Real Estate	China	2.2	0.0	2.2

Top Overweight Positions (% TNA)

	Fund	Index	Relative
PROSUS NV	4.4	0.0	4.4
BOC AVIATION LTD	3.4	0.1	3.3
CHINA MENGNIU DAIRY CO	2.6	0.3	2.3
POLY PROPERTY SERVICES CO LTD	2.2	0.0	2.2
DOUYIN CO LTD	2.2	0.0	2.2
NATIONAL ATOMIC CO KAZATOMPROM	2.0	0.0	2.0
CHINA OILFIELD SVCS LTD	1.9	0.1	1.8
CHINA OVERSEAS GR OCNS GRP LTD	1.8	0.0	1.8
XTEP INTERNATIONAL HLDGS LTD	1.7	0.0	1.7
CHINA MERCHANTS BANK CO LTD	3.0	1.3	1.7

Market Capitalisation Exposure (% TNA)

USD	Fund	Index	Relative
>10bn	47.3	82.0	-34.7
5-10bn	14.1	10.4	3.7
1-5bn	23.2	4.2	19.1
0-1bn	4.7	0.0	4.7
<b>Total Market Cap Exposure</b>	<b>89.4</b>	<b>96.6</b>	
Index / Unclassified	9.1	3.4	
<b>Total Equity Exposure</b>	<b>98.4</b>	<b>100.0</b>	

Regional Exposure (% TNA)

	Fund	Index	Relative
Emerging Asia	80.2	99.9	-19.7
Asia Pacific (ex-Japan)	10.0	0.0	10.0
Europe (Eurozone)	4.4	0.0	4.4
Emerging Europe	2.0	0.0	2.0
North America	1.8	0.1	1.7
<b>Total Regional Exposure</b>	<b>98.4</b>	<b>100.0</b>	
Other Index / Unclassified	0.0	0.0	
<b>Total Equity Exposure</b>	<b>98.4</b>	<b>100.0</b>	

Top Underweight Positions (% TNA)

	Fund	Index	Relative
ALIBABA GROUP HOLDING LTD	4.5	9.9	-5.4
XIAOMI CORP	0.0	2.9	-2.9
PING AN INS GROUP CO CHINA LTD	0.0	2.3	-2.3
BYD CO LTD	0.0	2.2	-2.2
MEITUAN	0.0	2.2	-2.2
BANK OF CHINA LTD	0.0	1.9	-1.9
TENCENT HLDGS LTD	8.3	10.1	-1.8
JD.COM INC	0.0	1.4	-1.4
PDD HOLDINGS INC	1.7	3.0	-1.3
PETROCHINA CO LTD	0.0	1.3	-1.3

**Methodology:** A position combines all equity investments (including derivatives) linked to an issuing company. Derivatives are included on an exposure basis so they reflect the equivalent underlying shares needed to generate the same return. Sector and geographic breakdown tables are calculated using the positions methodology.

**Top Positions:** those companies in which the largest percentages of the fund's total net assets are effectively invested. Positions in other funds - including ETFs (Exchange Traded Funds) - can appear in this table, but index derivatives form part of an "Other Index / Unclassified" category which will not appear.

**Top Overweight & Underweight Positions:** those positions which have the largest active weight relative to the index. Positions in other funds - including ETFs (Exchange Traded Funds) - can appear in this table, but index derivatives form part of an "Other Index / Unclassified" category which will not appear.

**Manager**

FIL Investment Management (Luxembourg) S.A.  
2a, rue Albert Borschette, L-1246 Luxembourg  
B.P. 2174  
L-1021 Luxembourg

**Custodian**

Brown Brothers Harriman (Luxembourg) S.C.A  
2-8, avenue Charles de Gaulle  
B.P. 403  
L-2014 Luxembourg

**Distribution**

**Frequency:** Annual  
**Date / Amount:** No dividend declared.

**Ongoing charges**

The ongoing charges figure represents the charges taken from the fund over a year. It is calculated at the fund's financial year end and may vary from year to year. For classes of funds with fixed ongoing charges, this may not vary from year to year. For new classes of funds or classes undergoing corporate actions (eg amendment to annual management charge), the ongoing charges figure is estimated until the criteria are met for an actual ongoing charges figure to be published. The types of charges included in the ongoing charges figure are management fees, administration fees, custodian and depositary fees and transaction charges, shareholder reporting costs, regulatory registration fees, Directors fees (where applicable) and bank charges. It excludes: performance fees (where applicable); portfolio transaction costs, except in the case of an entry/exit charge paid by the fund when buying or selling units in another collective investment undertaking. For more information about charges (including details of the fund's financial year end), please consult the charges section in the most recent Prospectus.

**Historic yield**

The historic yield for a fund is based on its dividends declared over the preceding 12 months. It is calculated by summing the dividend rates declared in that period, divided by the price as at the date of publication. Declared dividends may not be confirmed and may be subject to change. Where 12 months of declared dividend data does not exist a historic yield will not be published.

**Mandatory Disclosures**

- a. Collective investment schemes are generally medium to long-term investments;
- b. The value of participatory interests or the investment may go down as well as up;
- c. Past performance is not necessarily a guide to future performance;
- d. Collective investment schemes are traded at ruling prices and can engage in borrowing and scrip lending;
- e. A schedule of fees and charges and maximum commissions is available on request from the management company;
- f. The management company does not provide any guarantee either with respect to the capital or the return of a portfolio;
- g. The management company has a right to close the portfolio to new investors in order to manage it more efficiently in accordance with its mandate.

Fidelity International refers to the group of companies which form the global investment management organisation that provides information on products and services in designated jurisdictions outside of North America.

Fidelity only offers information on its own products and services and does not provide investment advice based on individual circumstances, other than when specifically stipulated by an appropriately authorised firm, in a formal communication with the client.

This communication is not directed at, and must not be acted upon by persons inside the United States and is otherwise only directed at persons residing in jurisdictions where the relevant funds are authorised for distribution or where no such authorisation is required.

Unless otherwise stated, all views are those of Fidelity.

Reference in this document to specific securities or funds should not be construed as a recommendation to buy or sell them, but is included for the purposes of illustration only. Investors should also note that the views expressed may no longer be current and may have already been acted upon by Fidelity. The research and analysis used in this documentation is gathered by Fidelity for its use as an investment manager and may have already been acted upon for its own purposes.

Past performance is not a reliable indicator of future results. The value of investments can go down as well as up and you may get back less than you invested. Fidelity, Fidelity International, the Fidelity International logo and F symbol are trademarks of FIL Limited.

This fund is managed by FIL Investment Management (Luxembourg) S.A.

For more information, please consult the Prospectus and latest Reports and Accounts which can be obtained free of charge in English and other main languages from FIL Investment Management (Luxembourg) S.A., the distributors or online at any time.

The Net Asset Values per Share are available at the registered office of Fidelity Funds (the 'UCITS'). They are also published online daily at [www.fidelityinternational.com](http://www.fidelityinternational.com) where other information is available.

This document describes a sub-fund and share class of the UCITS. The Prospectus and Reports and Accounts are prepared for the entire UCITS.

Country in which this fund is authorised: Luxembourg. The Supervisory Authority is: Commission de Surveillance du Secteur Financier.

Country in which FIL Investment Management (Luxembourg) S.A. is authorised: Luxembourg. The Supervisory Authority is: Commission de Surveillance du Secteur Financier.

**Disclaimer**

Collective Investment Schemes in Securities (CIS) should be considered as medium to long-term investments. The value may go up as well as down and past performance is not necessarily a guide to future performance. CIS's are traded at the ruling price and can engage in scrip lending and borrowing. The collective investment scheme may borrow up to 10% of the market value of the portfolio to bridge insufficient liquidity. A schedule of fees, charges and maximum commissions is available on request from the Manager. There is no guarantee in respect of capital or returns in a portfolio. A CIS may be closed to new investors in order for it to be managed more efficiently in accordance with its mandate. CIS prices are calculated on a net asset basis, which is the total value of all the assets in the portfolio including any income accruals and less any permissible deductions (brokerage, STT, VAT, auditor's fees, bank charges, trustee and custodian fees and the annual management fee) from the portfolio divided by the number of participatory interests (units) in issue. Forward pricing is used. The Fund's Total Expense Ratio (TER) reflects the percentage of the average Net Asset Value (NAV) of the portfolio that was incurred as charges, levies and fees related to the management of the portfolio. A higher TER does not necessarily imply a poor return, nor does a low TER imply a good return. The current TER cannot be regarded as an indication of future TER's. During the phase in period TER's do not include information gathered over a full year. Transaction Costs (TC) is the percentage of the value of the Fund incurred as costs relating to the buying and selling of the Fund's underlying assets. Transaction costs are a necessary cost in administering the Fund and impacts Fund returns. It should not be considered in isolation as returns may be impacted by many other factors over time including market returns, the type of Fund, investment decisions of the investment manager and the TER.

The Manager retains full legal responsibility for any third-party-named portfolio. Where foreign securities are included in a portfolio there may be potential constraints on liquidity and the repatriation of funds, macroeconomic risks, political risks, foreign exchange risks, tax risks, settlement risks; and potential limitations on the availability of market information. The investor acknowledges the inherent risk associated with the selected investments and that there are no guarantees.

Performance has been calculated using net NAV to NAV numbers with income reinvested. The performance for each period shown reflects the return for investors who have been fully invested for that period. Individual investor performance may differ as a result of initial fees, the actual investment date, the date of reinvestments and dividend withholding tax. Full performance calculations are available from the manager on request.

For any additional information such as fund prices, brochures and application forms please go to [www.fidelityinternational.com](http://www.fidelityinternational.com).

**Representative Office**

Prescient Management Company (RF) (Pty) Ltd,  
**Registration number:** 2002/022560/07  
**Physical address:** Prescient House, Westlake Business Park, Otto Close, Westlake, 7945  
**Postal address:** PO Box 31142, Tokai, 7966  
**Telephone number:** 0800 111 899  
**E-mail address:** [info@prescient.co.za](mailto:info@prescient.co.za)  
**Website:** [www.prescient.co.za](http://www.prescient.co.za)

**Asset Allocation**

		<b>Exposure</b>
		<b>(% TNA)</b>
	31/03/2026	31/12/2025
Equity	98.4	99.4
Other	0.0	0.0
Uninvested Cash	1.6	0.6