

CORONATION GLOBAL EMERGING MARKETS PRESCIENT FEEDER AMETF

Fund Information as at 31 December 2025

WHAT IS THE FUND'S OBJECTIVE?

Global Emerging Markets aims to give investors access to the best opportunities in emerging equity markets. The fund actively seeks out attractively valued shares to maximise long-term growth. Our intent is to outperform the emerging equity benchmark over all periods of five years and longer.

WHAT DOES THE FUND INVEST IN?

The fund invests in the shares of companies which are either based in emerging countries, or earn a significant part of their revenue from emerging economies. It can also invest in cash and bonds, but will remain biased towards shares at all times. The fund is mandated to use derivative instruments for efficient portfolio management purposes.

IMPORTANT PORTFOLIO CHARACTERISTICS AND RISKS

Risk Profile



Maximum growth/ minimum income exposures



The fund will only invest in shares we view as being attractively valued and which may offer superior long-term investment growth.

The fund's share selection is the result of rigorous international research conducted by Coronation's investment team.

While we have a disciplined approach to reducing risk, shares can be volatile investments and there is a meaningful risk of capital loss over the short term. Emerging markets are generally viewed as more risky than developed markets. Global currency movements may intensify investment gains or declines.

HOW LONG SHOULD INVESTORS REMAIN INVESTED?

The fund is managed to deliver the best possible returns over the long term; an investment horizon of 10 years or more is therefore ideal. It is not suitable as a single investment for investors who need to preserve their capital over five years or less.

WHO SHOULD CONSIDER INVESTING IN THE FUND?

Investors who are building wealth, and who

- ▶ are comfortable with full exposure to shares in emerging markets;
- ▶ accept that the fund may underperform the market significantly in the short term in pursuit of superior long-term gains;
- ▶ hold other investments and are looking for exposure to emerging markets;
- ▶ do not require an income from their investment.

WHAT COSTS CAN I EXPECT TO PAY?

An annual fee of 0.95% is payable.

The full annual fee is collected in the master fund. Fund expenses that are incurred in the fund include administrative, trading, custody and audit charges. All performance information is disclosed after deducting all fees and other portfolio costs.

We do not charge any fees to access or withdraw from the fund.

More detail is available on www.coronation.com.

WHO ARE THE FUND MANAGERS?

GAVIN JOUBERT

BBusSc, CA (SA), CFA

SUHAIL SULEMAN

BBusSC, CFA

IAKOVOS MEKIOS

Ptychion (BSc), MIA, IMC, CFA

ORI SACHS

BBusSC, CFA

GENERAL FUND INFORMATION

Investment Manager	Coronation Asset Management (Pty) Ltd
Management Company	Prescient Management Company (RF) (Pty) Ltd
Liquidity provider	Prescient Securities (Pty) Ltd
Launch Date	22 August 2024
Benchmark	MSCI Emerging Markets Index
ASISA Fund Category	Global – Equity – General
Income Distribution	Annually (March)
Bloomberg Code	COGEM SJ
ISIN Code	ZAE000337176
JSE Code	COGEM
Base Currency	ZAR
Exchange	JSE

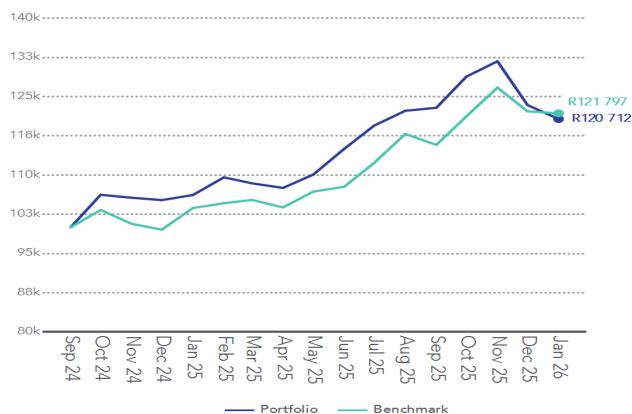
CORONATION GLOBAL EMERGING MARKETS PRESCIENT FEEDER AMETF

As at 31 December 2025

ASISA Fund Category	Global - Equity - General
Launch date	22 August 2024
Fund size	R221.08 million
NAV	1173.71 cents
Benchmark	MSCI Emerging Markets Index
Portfolio manager/s	Gavin Joubert, Suhail Suleman and Iakovos Mekios
Number of units	18 837 921 units

PERFORMANCE AND RISK STATISTICS

GROWTH OF A R100,000 INVESTMENT (AFTER FEES) ILLUSTRATIVE PERFORMANCE



The investment performance is for illustrative purposes only. The investment performance is calculated by taking the actual initial fees and all ongoing fees into account for the amount shown and income is reinvested on the reinvestment date

PERFORMANCE FOR VARIOUS PERIODS (AFTER FEES)

	Fund	Benchmark
Since Launch (unannualised)	20.7%	21.8%
Since Launch (annualised)	15.2%	15.9%
Latest 1 year	13.7%	17.5%
Year to date	13.7%	17.5%

RISK STATISTICS SINCE LAUNCH

	Fund	Benchmark
Annualised Deviation	10.9%	9.9%
Sharpe Ratio	1.00	1.17
Maximum Gain	22.5%	13.5%
Maximum Drawdown	(8.4)%	(3.9)%
Positive Months	62.5%	62.5%

	Fund	Date Range
Highest annual return	24.7%	Nov 2024 - Oct 2025
Lowest annual return	13.7%	Jan 2025 - Dec 2025

MONTHLY PERFORMANCE RETURNS (AFTER FEES)

	Jan	Feb	Mar	Apr	May	Jun	Jul	Aug	Sep	Oct	Nov	Dec	YTD
Fund 2025	3.2%	(1.0)%	(0.8)%	2.4%	4.5%	3.9%	2.4%	0.5%	4.9%	2.3%	(6.4)%	(2.2)%	13.7%
Fund 2024									6.2%	(0.5)%	(0.4)%	0.9%	6.2%

Total Expense Ratio	1 Year	3 Year
Fund management fee	1.04%	0.00%
Fund expenses	0.01%	0.00%
VAT	0.00%	0.00%
Transaction costs (inc. VAT)	0.25%	0.00%
Total Investment Charge	1.29%	0.00%

PORTFOLIO DETAIL

EFFECTIVE ASSET ALLOCATION EXPOSURE

Country	31 Dec 2025
Equities	99.16%
China	19.19%
Brazil	13.77%
India	11.82%
South Korea	10.78%
Taiwan	8.78%
Singapore	7.76%
Indonesia	4.89%
Hong Kong	3.84%
Italy	3.38%
France	3.19%
Other	11.76%
Cash	0.84%
ZAR	0.69%
Other	0.18%
USD	(0.03)%

TOP 10 HOLDINGS

As at 31 Dec 2025	% of Fund
Tsmc (Taiwan)	7.5%
Sea (Singapore)	6.1%
Mercadolibre (Brazil)	6.1%
Nu Holdings (Brazil)	4.8%
Prosus (China)	4.0%
Aia Group (Hong Kong)	3.8%
Hdfc Bank (India)	3.5%
Contemporary Amperex Techn (China)	3.2%
Airbus Group Se (France)	3.2%
Bank Central Asia (Indonesia)	3.1%

SECTORAL EXPOSURE

As at 31 Dec 2025	Fund
Consumer Discretionary	40.1%
Financials	23.1%
Information Technology	14.9%
Industrials	9.9%
Communication Services	8.1%
Energy	1.5%
Consumer Staples	1.4%
Cash	0.9%

INCOME DISTRIBUTIONS

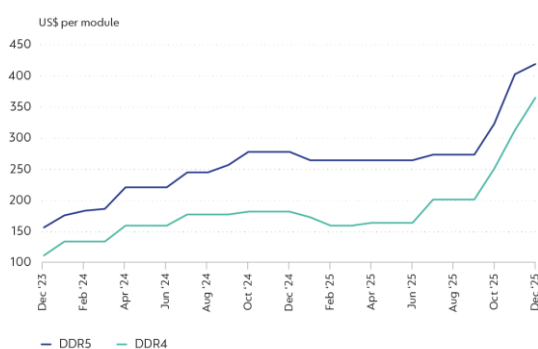
Declaration	Payment	Amount	Dividend	Interest
01 Apr 2025	02 Apr 2025	0.73	0.00	0.73

Please note that the commentary is for the retail class of the Fund. All Fund and share price returns are quoted in ZAR.

The Fund had a tough final quarter of 2025, returning -6.1% for the period, underperforming the benchmark MSCI Emerging Markets (Net) Total Return Index by 6.6%. Whilst the absolute returns for 2025 as a whole across both the emerging markets index (+17.5%) and the Fund (+14.1%) were strong, the underperformance in Q4 erased the prior positive relative outperformance for the year, leaving the Fund 3.4% behind the benchmark for the year as a whole after being as much as 5% ahead (year to date) in October. There were stock-specific factors that drove this negative performance, which we believe will reverse in time. This view is informed by the exceptional value the Fund offers at the time of writing: the holdings imply a weighted average upside of 70% and a 20% p.a. internal rate of return (both figures based on our long-term valuation metrics).

The biggest positive contributor to outperformance for the quarter was SK Hynix (Hynix), with the share returning 74% for the period and providing +0.8% outperformance. For the year as a whole, Hynix returned an astounding 234% and was the biggest source of positive relative return (alpha) for the Fund for the year. Hynix has arguably been one of the biggest beneficiaries of the boom in AI-related investment within the emerging market universe. Its investment in High Bandwidth Memory (HBM) has paid off handsomely; Hynix is the primary supplier of these chips to Nvidia for use in data centres, with its traditional rival Samsung being the laggard. The third generation of these chips (HBM3) will still predominate in 2026; however, the fourth generation (HBM4) has been approved by Nvidia and will start being shipped later this year. The lack of spare capacity means the market is in short supply, which supports pricing (Figure 1). The overall lack of capacity in the memory market has also fed through into the traditional memory market, which is positive for profits from that part of its business too. Despite the strong share price performance, Hynix trades at an undemanding 6x earnings for 2026. The Fund sold part of its holding in Hynix in response to the sharp share price appreciation to a 2.8% position at quarter-end after being over a 4% position at one point.

Figure 1
SERVER DRAM* CONTRACT PRICE



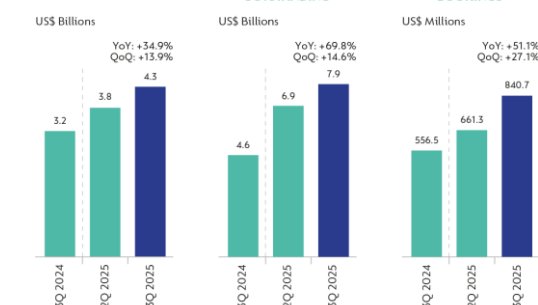
*Dynamic Random Access Memory
Sources: Bloomberg and Coronation Research

Alibaba declined about 22% during the period, and given its large weight in the index, contributed +0.8% to relative return. The decline in the share price, together with an ongoing reassessment of the investment case for Alibaba (which is showing improved performance in its core ecommerce division, an accelerating cloud business, and generally a renewed focus), resulted in the Fund buying a small position (0.5% at quarter-end).

Other material positive contributors to relative performance were Xiaomi (-30%, +0.3% impact) and Wiyynn (+26% return, +0.3% impact).

There were a handful of significant detractors, the largest being SEA Limited (SEA). Whilst SEA's share price almost doubled during the first nine months of the year, it then promptly retraced from its highs, costing the Fund 1.5% in relative performance in Q4. Much of this decline occurred after the release of third quarter results. Revenue growth was very strong across all divisions (ecommerce, fintech, and gaming) on both a year-on-year (YoY) and quarter-on-quarter (QoQ) basis.

Figure 2
E-COMMERCE GAAP REVENUE
DIGITAL FINANCIAL SERVICES LOANS PRINCIPAL OUTSTANDING¹
DIGITAL ENTERTAINMENT BOOKINGS²



¹ Company definition of total on-book and off-book loans.
² Company-defined approximation of total cash spent by users.
Source: SEA investor relations, 3Q results

Although both operating profit and net income more than doubled YoY, profitability was behind expectations, particularly in Shopee (ecommerce). This was largely due to SEA investing in fulfilment capabilities (which is their differentiated moat) in order to strengthen its position, as opposed to investment from a defensive perspective. SEA has a dominant position in ecommerce in Southeast (SE) Asia (with an estimated 50% market share in ecommerce in the six core SE Asian markets of Indonesia, Thailand, Vietnam, the Philippines, Malaysia,

and Singapore) and it is gaining market share in its other core market, Brazil, as well as making inroads in Taiwan.

SEA has been through periods of investment before and typically emerges in a much stronger position. The market, in our view, is extrapolating a temporary period of investment into an expectation of permanently reduced profitability. Late in the year, we also spent time with the head of their fintech business at SEA's head office in Singapore and came away more excited about the significant opportunity here where they are way ahead of all competitors. With our long-term earnings estimates and fair value largely unchanged (and with close to 100% upside), we used the share price decline as an opportunity to increase the position size to 5.7% of the Fund.

The next largest negative detractor in Q4 was Coupang, a Korean ecommerce business with secondary operations in Taiwan (-28% return, -1.3% impact). Coupang had already retreated from its earlier highs, but in late November, a negative development emerged in Korea where the personal data on 34m accounts leaked in a data breach. The urgency of the company's response to this initially seemed to be lacking, with the founder declining to appear before the Korean parliament to offer an explanation and mea culpa. As time passed, however, the scale of the impact of this breach became clearer, and suggested the market reaction was overdone. Firstly, it appeared to be the result of deliberate action by a rogue employee, who was identified in a joint operation with the local authorities and who confessed to his actions. The company further revealed that data from only a small number of accounts was actually stored (relative to the 34m total accounts accessed) and that no information was leaked to outside third parties.

There will likely be a fine to pay – the maximum cited is 3% of Korean revenue (or roughly \$900m, relative to a \$42bn market cap), and there has been reputational damage, but in the absence of a strong competitor within Korea, the operational impact of this episode for Coupang is likely to be limited. Given that this was the result of malicious behaviour from an employee rather than negligence by the company, the fine is likely to be much smaller than the potential maximum. However, the company will have to invest internally to improve data protection and ensure this does not happen again.

Other notable detractors were Samsung Electronics (-1% impact), Mercado Libre (-0.9% impact), and JD.com (-0.7% impact). As we reduced the Hynix position, we added to our position in Samsung during the period, informed largely by our positive view on HBM, where it is catching up with Hynix, but this was still a substantial underweight in a stock that went up 27% in the quarter. Mercado Libre's negative share price move (-18%) was primarily driven by concerns over short-term competitive intensity in Brazil as well as general fears over the sustainability of Argentina's economic stabilisation programme and potential currency devaluation. We added significantly to the position as it declined, taking it to a 5.0% position at quarter-end. JD.com's negative share price move (-23%) was a continuation of the food delivery investment wars in China, with Meituan, Alibaba, and JD.com all taking each other on and burning through cash in the process. This irrational competition is noticeably reducing, and JD.com has been sold down to bargain levels – it trades at around 5x forward earnings adjusted for cash. There has been a sea change in management's attitude towards capital allocation – during 2025 they bought back about 6.3% of the company, more than half of this was during the fourth quarter alone.

There were two meaningful new purchases (> 0.5% weight) in the quarter – Kiwoom Securities (Kiwoom), a Korean stockbroker, and Ixigo, an Indian online travel agency (OTA). Kiwoom has the largest market share in Korea in stockbroking for both domestic and international equities and derivatives. It also offers other related services like investment banking and project financing. Kiwoom trades on less than 7x forward earnings and pays a 5.5% dividend yield. The newly-elected Korean government has announced a raft of measures aimed at unlocking the discount at which Korean stocks trade to their emerging as well as developed market equivalents. Greater minority investor protections and favourable tax treatment for equities are among the many changes announced in recent months. Korea is a rapidly ageing society, and the vast majority of households have real estate exposure as their main asset. Korea's largest companies are geared towards serving international customers, so the equity market provides a way for Koreans to diversify away from the domestic economy, which is at risk of falling property prices as the population declines.

In the case of Ixigo, we know the Indian travel market very well, with long-standing coverage of Fund holding MakeMyTrip. Ixigo is the number one player in train tickets (60% market share) and has been diversifying into flights (10% market share, no.3 player), buses (approaching 20% market share, no.2 player), and, most recently, hotels. Travel is very much in its infancy in India, and we have seen how this market plays out as wealth levels rise through our experience with Trip.com in China, which we have covered since 2009. The sheer size of the opportunity is such that it can be highly profitable for two to three players, each with a different area of strength. Management (who are also the founders of the business) are very impressive in our view and come from a technology background, so they think carefully about pain points in the booking process and the use of AI in enhancing the product experience for customers.

In order to fund the additional investment in some of the high-conviction names that came under pressure in the quarter (SEA and Mercado Libre, in particular), as well as the new buys discussed above, we sold a few stocks out of the Fund. In some cases, the shares reached our assessment of fair value (Netease.com and Asia Vital Components). In others (Li Ning, Anheuser-Busch InBev), better risk-adjusted returns elsewhere in similar holdings (Adidas, PRIOT, Tencent Music, respectively, and all of which we added to), were the primary reason. In the case of BYD, a price war in the Chinese EV market with an uncertain endpoint was a significant factor.

There was extensive travel during the period, mostly focused on Asia, with China, Korea, Taiwan, Hong Kong, Singapore, and Indonesia visited. More than 200 meetings with management teams, industry participants, and policymakers were held.

Portfolio managers
Gavin Joubert, Suhail Suleman, Iakovos Mekios and Ori Sachs
as at 31 December 2025

Portfolio manager update

We are pleased to welcome Ori as co-manager of the Fund. Ori is Joint-Head of Global Emerging Markets Research and a portfolio manager in Coronation's Global Emerging Markets team. He joined Coronation in March 2020 and has 10 years' investment experience, bringing additional depth and specialist emerging markets insight to the Fund's investment process.

IMPORTANT INFORMATION THAT SHOULD BE CONSIDERED BEFORE INVESTING IN THE CORONATION GLOBAL EMERGING MARKETS PRESCIENT FEEDER AMETF

Collective investment schemes (CISs) should be considered as medium to long-term investments. The value of units may go down as well as up, and therefore Prescient does not make any guarantees with respect to the protection of capital or returns. Past performance is not necessarily an indication of future performance. The fund is mandated to invest up to 100% of its portfolio into foreign securities and may as a result be exposed to macroeconomic, settlement, political, tax, reporting or illiquidity risk factors that may be different to similar investments in the South African markets. Fluctuations or movements in exchange rates may cause the value of underlying investments to go up or down. The investor acknowledges the inherent risk associated with the selected investments and that there are no guarantees. A feeder fund invests in a single fund of a collective investment scheme, which levies its own charges and could result in a higher fee structure for the feeder fund. The asset allocation by instrument type are reflected on a look-through basis. The asset allocation by issuer type and top issuer exposures are not reflected on a look-through basis. The Management Company and Trustee are registered and approved under the Collective Investment Schemes Control Act (No.45 of 2002). Prescient is a member of the Association for Savings and Investments South Africa. The Management Company reserves the right to close the fund to new investors if we deem it necessary to limit further inflows in order for it to be managed in accordance with its mandate. The Manager retains full legal responsibility for any third party-named portfolio. CISs are allowed to engage in scrip lending and borrowing. Standard Bank has been appointed as trustees for the fund. Prescient is a full member of the Association for Savings & Investment SA (ASISA). Exchange Traded Funds vs Unit Trusts: Whilst both unit trusts and ETFs are regulated and registered under the Collective Investment Schemes Control Act, ETFs trade on stock exchanges just like any other listed, tradable security. Unlike a unit trust, which can be bought or sold only at the end of the trading day, an ETF can be traded intraday, during exchange trading hours. Exchange traded funds are listed on an exchange and may incur additional costs. This portfolio operates as a white label fund under the Prescient ETF Scheme, which is governed by the Collective Investment Schemes Control Act.

Management Company: Prescient Management Company (RF) (Pty) Ltd **Registration number:** 2002/022560/07 **Physical address:** Prescient House, Westlake Business Park, Otto Close, Westlake, 7945 **Postal address:** PO Box 31142, Tokai, 7966. **Telephone number:** 0800 111 899 **E-mail address:** info@prescient.co.za **Website:** www.prescient.co.za.

Trustee: Standard Bank of South Africa Ltd **Registration number:** 1962/000738/06 **Physical address:** Standard Bank Centre, 5 Simmonds Street, Johannesburg, South Africa 2001 **Telephone number:** 0860 222 050 **Website:** www.standardbank.co.za

HOW ARE UNITS PRICED AND AT WHICH PRICE WILL MY TRANSACTION BE EXECUTED?

CISs are traded at ruling prices set on every trading day. Fund valuations take place at approximately 15h00 each business day, except at month end when the valuation is performed at approximately 17h00 (JSE market close) and forward pricing is used. Instructions must reach the Management Company before 14h00 (12h00 for the Money Market Fund) to ensure same day value. The payment of withdrawals may be delayed in extraordinary circumstances, when the manager with the consent of the fund trustees deem this to be in the interest of all fund investors. These circumstances may include periods when significant underlying markets suspend trading which will prevent accurate valuation of the instruments held in the fund. When the suspension of trading relates to only certain assets held by the fund, these assets may be side-pocketed. This process allows normal liquidity on the assets that can be valued, but will delay liquidity on the affected portion of the fund. If the fund is faced with excessive withdrawals, the affected withdrawals may be ring-fenced, which is the separation and delayed sale of the assets reflecting the interest of the liquidity seeking investors. It ensures that the sale of a large number of units will not force Coronation to sell the underlying investments in a manner that may have a negative impact on remaining investors of the fund.

HOW WAS THE PERFORMANCE INFORMATION INCLUDED IN THIS FACT SHEET CALCULATED?

Performance is calculated by using net NAV to NAV numbers with income distributions reinvested. All underlying price and distribution data is sourced from Morningstar. Performance figures are quoted after the deduction of all costs (including manager fees and trading costs) incurred within the fund. Note that individual investor performance may differ as a result of the actual investment date, the date of reinvestment of distributions and dividend withholding tax, where applicable. Annualised performance figures represent the geometric average return earned by the fund over the given time period and are available to investors on request. Unannualised performance represents the total return earned by the fund over the given time period, expressed as a percentage.

Highest & Lowest return: The highest and lowest returns for any 1 year over the period since inception have been shown. NAV: The net asset value represents the assets of a Fund less its liabilities.

HOW ARE THE BENCHMARK RETURNS CALCULATED?

The benchmark used for performance purposes is the MSCI Emerging Markets Index.

WHAT IS THE TOTAL EXPENSE RATIO (TER) AND TRANSACTION COSTS (TC)?

The TER and Transaction Costs cannot be determined accurately because of the short life span of the Financial Product. Calculations are based on actual data where possible and best estimates where actual data is not available. TER is calculated as a percentage of the average net asset value of the portfolio incurred as charges, levies and fees in the management of the portfolio over the period referenced. The TER charged by any underlying fund held as part of a fund's portfolio is included in the fund expenses portion of the TER, but trading and implementation costs incurred in managing the underlying fund are excluded. A higher TER does not necessarily imply a poor return, nor does a low TER imply a good return. The current TER may not necessarily be an accurate indication of future TER's. The 1-year TER is for the 12 months to end of the previous financial year (updated annually). The 3-year TER is for a rolling 36-month period to the last available quarter end (December, March, June and September). Transaction costs are a necessary cost in managing a fund and impacts the fund's return. They should not be considered in isolation as returns may be impacted by many other factors over time including market returns, the type of fund, the investment decisions of the investment manager and the TER. The Total Investment Charge is the sum of the Total Expense Ratio (TER) and transaction costs.

ADVICE AND PLATFORM COSTS

Coronation does not provide financial advice. If you appoint an adviser, advice fees are contracted directly between you and the adviser. For more information, please contact the relevant platform (Linked Investment Service Provider or Life Assurance Provider).

WHERE CAN I FIND ADDITIONAL INFORMATION?

Additional information such as daily fund prices, brochures, application forms and a schedule of fund fees and charges is available on the manager's website: www.prescient.co.za.

IMPORTANT INFORMATION REGARDING TERMS OF USE

This document is for information purposes only and does not constitute or form part of any offer to issue or sell, or any solicitation of any offer to subscribe for or purchase any particular investment. Opinions expressed in this document may be changed without notice at any time after publication. We therefore disclaim any liability for any loss, liability, damage (whether direct or consequential) or expense of any nature whatsoever which may be suffered as a result of or which may be attributable, directly or indirectly, to the use of or reliance upon the information.

The fund has adhered to its policy objective.